



Your Global Partner in IT and Wireless
"Top ASP in Quality – Past 12 months"

Datalogix Jobs Bulletin

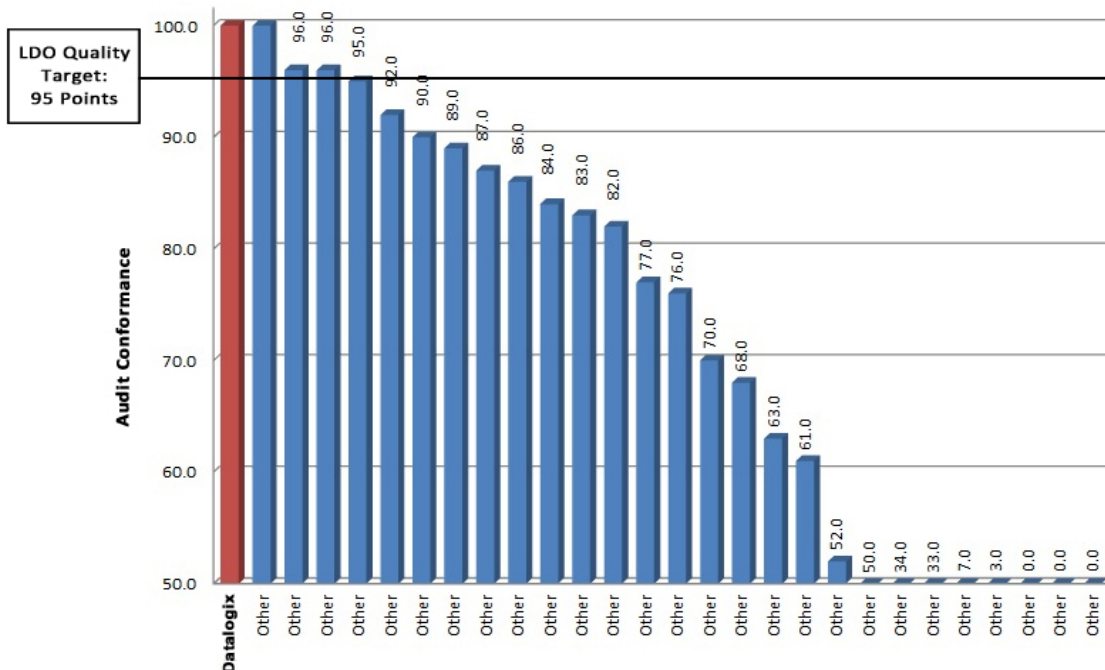
March 2013

Candidates must send an updated resume and salary requirements to: careers@datalogixtexas.com. **Candidates must already be present in the U.S., and must be U.S. citizens, permanent residents or have valid work visas.** We will consider overseas candidates for our next round of H-1B petitions. **Recommend your friends!** We will give you a **\$500.00** finder's fee for each qualified candidate hired that you recommend. We give competitive salaries, long-term projects, and a seniority benefits program that is unmatched in the industry. For any questions, send an email to: Human Resources, at hr@datalogixtexas.com. Also visit our website: <http://www.datalogixtexas.com/careers> for job updates, and view our **Datalogix Video** at <http://www.datalogixtexas.com/datalogix-video.html>.

Datalogix is a "Top Contractor in Quality in 2011 through 2012!"

Join an organization that is a consistent Top Performer in QA. We are very proud to announce that Datalogix was judged a "Top ASP in Quality Performance through 3Q-2012" from most recent QA audit results, out of 28 ASPs audited.

LDO Quality Score by RBS Deployment (Q3) (DATALOGIX IS RANKED AS a TOP ASP THROUGH 3Q2012)



Urgent Openings:

[RTU LTE Field Technicians](#) – *Work is starting NOW!*

Openings: 10 **Location:** South TX – Houston, San Antonio, Austin, Rio Grande Valley

Qualifications: Background in installation and integration required. Experience in GSM. UMTS or LTE installation and integration of RBS 6000 (6102 & 6201), RBS 3000 (3102 & 3106) and RBS 2000 (2106 & 2206). LMU commissioning, integration, troubleshooting experience. Able to perform a pre-sweep [RL] Return Loss and [DTF] Distance to Fault on up to twelve (12) existing lines and also a post-sweep. Experience in connectorizing RF jumpers and weatherproofing RF jumpers. Flexible in scheduling and able to work long shifts. Daytime only. Must be authorized and available for immediate work in the U.S..

[GR Field Installers](#) – *Work is starting NOW!*

Openings: 10 **Location:** South TX – Houston, San Antonio, Austin, Rio Grande Valley

Qualifications: Experience in Ericsson RBS installation preferred. Must have all basic installation tools and equipment. Must be authorized and available for immediate work in the United States.

[RTU Field Technicians](#) – *Immediate Openings!*

Openings: 7 **Locations:** CA – Los Angeles, San Diego and Bay Area

Qualifications: Experience in UMTS & GSM installation and integration of RBS 3000 (3102 & 3106) and RBS 2000 (2106 & 2206). LMU commissioning, integration, troubleshooting experience. Able to perform a pre-sweep [RL] Return Loss and [DTF] Distance to Fault on up to twelve (12) existing lines and also a post-sweep. Experience in connectorizing RF jumpers and weatherproofing RF jumpers. Flexible in scheduling and able to work long shifts. Guaranteed hours for T-Mobile certified individuals through end of March 2013.

[RTU LTE Field Technicians](#) – *Work expected to start in 2Q!*

Openings: 10 **Location:** TX – Dallas and North Texas

Qualifications: Background in installation and integration required. Experience in GSM. UMTS or LTE installation and integration of RBS 6000 (6102 & 6201), RBS 3000 (3102 & 3106) and RBS 2000 (2106 & 2206). LMU commissioning, integration, troubleshooting experience. Able to perform a pre-sweep [RL] Return Loss and [DTF] Distance to Fault on up to twelve (12) existing lines and also a post-sweep. Experience in connectorizing RF jumpers and weatherproofing RF jumpers. Flexible in scheduling and able to work long shifts. Daytime only. Must be authorized and available for immediate work in the U.S..

[GR Field Installers](#) – *Work expected to start in 2Q!*

Openings: 10 **Location:** TX – Dallas and North Texas

Qualifications: Experience in Ericsson RBS installation preferred. Must have all basic installation tools and equipment. Must be authorized and available for immediate work in the United States.

[RT2 Ericsson Field Technicians/Integrators](#) – *Work expected to start soon*

Openings: 10 **Location:** TX – South Central (TX, OK, AK, KS, LA)

Qualifications: Installation, Commissioning and Integration background in GSM, UMTS or LTE required. Sprint Network Vision training/certification preferred. This project will last until 2014.

[GR2 Lucent-Alcatel Installers](#) – *Immediately needed*

Openings: 8 **Location:** TX – NY City and Upstate New York

Qualifications: Alcatel Lucent UMTS cabinet installation and green light testing of ALU equipment experience required. T1 migration to T1 over IP. Running and testing T1 cables. Possible need to load software on new Alcatel Lucent UMTS cabinets. Will reimburse for receipted parking and tolls. Local NY residents preferred.

More Telecom Openings

Ericsson RTU2	Northern CA	Multiple Openings. UMTS & GSM experience required. LTE preferred.
Ericsson RTU2	Charlotte NC	Multiple Openings. UMTS & GSM experience required. LTE preferred.
Ericsson RTU2	NY – New York Pennsylvania	Multiple Openings. UMTS & GSM experience required. LTE preferred.
RF Engineer II	CA – Burbank	CDMA/EVDO RF engineer to support local market team in the Network Advantage and Network Vision contracts. Responsible for multiple aspects of RF engineering support, RF troubleshooting and optimization, interference analysis, hardware and software defects, and drive testing. Responsible for maximum permissible exposure compliance work throughout the LA market.
Project Manager II	CA – Irvine	(contact Datalogix for details)
Backhaul Project Manager - Sprint	FL – Miami	(contact Datalogix for details)
Implementation Manager II	FL – Orlando	(contact Datalogix for details)
Implementation Manager II	FL – Tampa	(contact Datalogix for details)
Implementation Manager II - Sprint	GA – Atlanta	Manage all aspects of Telecom Equipment deployment from: Customer relationship, project plan of record, project schedule, cost, inventory, and identifying scope creep to the Ericsson CPM. ASP process adherence, compliance and deliverables. Knowledge of the following products: AXE 501, AXE 810 3G UMTS, Power PDU, EPDU. BTS 2100 series, UMTS Node B 3100 series cabinets, BBU power. Understanding of Core network connectivity (MSN, BSS, DAX- OC3) and RAN network connectivity- T1 NIU. to transport DAX.
Project Manager II	GA – Atlanta	(contact Datalogix for details)
Transport Engineer	KS - Overland Park	This position can work remote with 25% expected travel and 50% travel possible within the United States. Must be available to work between the hours of 7:00am CST and 7:00pm CST. Will be required to work with local market team and cross-functional national engineering teams. Experience with Fiber Transport, Access Planning, cost analysis and business case development. Experience and examples of design, development and use of Microsoft Visio and Excel. Develop documentation of existing Transport design and process flow of current processes and cross-functional hand-off documents to Network Operations and Core Engineering as well as ensuring database integrity. Understand fiber design and transport path to Core equipment, cross-connect and colo facility layout and be able to review existing designs cross-referencing with existing documentation for confirm accuracy.
Implementation Manager II	LA - New Orleans	(contact Datalogix for details)
Implementation Manager II	TN - Clarksville	(contact Datalogix for details)
Project Manager III - SNV Area Lead	TN - Memphis	Assignment covers the responsibilities of the Project Manager/Area Lead (PM) on the Sprint Network Vision Program, Memphis TN and West Kentucky markets. Accountable for profitability and customer satisfaction by managing large and complex Network Rollout projects. The PM works in very close cooperation with the Regional Lead and Project Controls PM. The PM is responsible, for a subset of the overall region, for end to end network deployment deliveries.
Project Manager II	TX - Irving	(contact Datalogix for details)
Project Manager II – Sprint EEGS	TX - Plano	This assignment states that the appointed person is assigned the role as Customer Project Manager for the EEGS and 3G CDMA Deployment. Note: The project manager can be based in the markets or in Ericsson facility, with trips to the market as it requires meeting the customer or following up on field activities. Markets: Kansas, Atlanta, Houston, San Antonio, Dallas-Fort Worth. The CDMA PM will be responsible for scheduling, managing and reporting the CDMA activities from initial planning, implementation including ground and tower top installation, integration, ATP testing, and migration. The PM will be working with internal teams and customer to plan, schedule, staff, and update progress. Update stakeholders with written reporting and status calls.

RF Engineer UMTS NPI (multiple)	TX - Plano	(contact Datalogix for details)
Implementation Manager II	TX - San Antonio	Manage all aspects of Telecom Equipment deployment from: Customer relationship, project plan of record, project schedule, cost, inventory, and identifying scope creep to the Ericsson CPM. Requires knowledge of the following products: AXE 501, AXE 810 3G UMTS, Power PDU, EPDU. BTS 2100 series, UMTS Node B 3100 series cabinets, BBU power. Requires an understanding of Core network connectivity (MSN, BSS, DAX- OC3) and RAN network connectivity- T1 NIU. to transport DAX.
IT Openings		
Sr. Microsoft BI Architect	AR - Bentonville	Deep knowledge of Microsoft Systems Reporting Services, Analysis Services, Integration Services (SSIS, SSAS and SSRS). Key competencies in data quality, data modeling, master data services, Kimball /Inmon / Data Vault approaches to data warehouse design. Translate Business Requirements to Data Warehousing Requirements to Application and Technical Specifications. Server and storage architectures and associated concepts such as sequential/O, HW SW balanced systems design, fiber channel, SAS storage etc. Transaction modeling skills and the ability to architecture enterprise scale databases. Strong knowledge of architectures for high-availability and fault tolerance (e.g.clustering, Database Mirroring).
SQL Server DBA	KS - Kansas City	Perform regular database instance-level as well as application-level tuning. Provide on-call support 24x7x365. Ensure contingency plans for each database system (backup, recovery and failover) are documented and tested. Design, document disaster recovery plan with consideration for key dependencies. Propose and develop strategic database improvements in technical areas of database implementation, support and enhancements. Monitoring database performance, repairing deadlock errors, executing maintenance packages, monitoring space and updating index statistics. Monitors and manages database backups, logs, and journals; installs, maintains and upgrades database software; restores and/or recovers data as required.
UI Developer/Core Java	NJ - Short Hills	Multiple Openings. Experience/skills in Core Java, Struts, JSP, XML,Ajax, JQuery,Maven, Oracle SQL, CSS.
Sr. .NET Developer	TX - Austin	9+ years of MVC 3/WCF/ASP.NET/C#. Previous experience on web platforms, preferably large ecommerce systems.
IBM Websphere Architect	WA - Seattle	IBM Websphere Commerce architects. The successful candidates will have a good understanding of how to integrate the Commerce platform with external platforms for Search, CDN etc.
Sr Software Engineer	WA - Bellevue	8+ years' experience in C#/.NET(Console Application /Web Application /Web Services) development with strong SQL. Experience including: OOP, Socket programming, Regular Expressions, Patterns. Familiarity with implementation details of hash tables, trees, string parsing and grammars. Engineering experience with SDLC: bug tracking, code management, unit testing, test automation, and automated build systems. Working Experience or knowledge on creating Custom ETL's using C# is a strong plus. Working Experience or knowledge using Netezza Database is a strong plus. Telco OSS development and support is a strong plus.
SNMP/Zenoss Application Developer	WA - Bellevue	Software design and elements of C#/.NET(Console Application /Web Application /Web Services) development, ZenOss, Python development, Shell scripting, SQL development, and Regular Expressions. Experience with SNMP v2c, multi-dimensional MIBVAR parsing & correlation a big plus.
Java/ J2ee Developer/Designer	IL - Bloomington	(contact Datalogix for details)

Candidates must send an updated resume and salary requirements to: careers@datalogixtexas.com. **Candidates must already be present in the U.S., and must be U.S. citizens, permanent residents or have valid work visas.** We will consider overseas candidates for our next round of H-1B petitions. **Recommend your friends!** We will give you a **\$500.00** finder's fee for each qualified candidate hired that you recommend. We give competitive salaries, long-term projects, and a seniority benefits program that is unmatched in the industry. For any questions, send an email to: Human Resources, at hr@datalogixtexas.com. Also visit our website: <http://www.datalogixtexas.com/careers> for job updates, and view our **Datalogix Video** at <http://www.datalogixtexas.com/datalogix-video.html> .